

Svea Evangelical Lutheran Church

FEBRUARY REMINDER

12651 15th Street SE, Svea MN 56216 320-995-6500

www.svealutheranchurch.org

“By the sweat of your face
you shall eat bread
until you return to the ground,
for out of it you were taken;
you are dust,
and to dust you shall return.” Genesis 3:19



Lent is the season of reflection and repentance. We are offered the opportunity to reflect on our sins, on our inability to love our neighbor, our attempts to reconcile our actions with the tenants of our faith, and our inability to see a beloved creation in the eyes of the other.

Upon these reflections we are called to repent; quite literally returning to the kingdom of God as enacted in the life of Jesus Christ. There are a great number of opportunities presented to us every day to create division and discord with our neighbors. The standard by which we are allowed to conduct ourselves seems altered in the public debates as the division grows in defining human beings. We live in a time and place where people are more offended at being called ‘offensive’ than being the guilty party of the original offense. How are we to live as an assembly that demands accountability to God when even admitting an offense remains our greatest challenge? This reality is certainly compounded by our constant desire to point out the fault in our neighbor’s actions long before we acknowledge our own sinfulness.

It is well then in this year of division and discord that St. Mark reminds us early on of Jesus ministry of repentance in the nearing of God’s kingdom. We come together then Ash Wednesday which falls on the rather poignant date of February 14th this year to be reminded of our original offense. As God casts Adam and Eve out from the garden for thinking themselves more knowledgeable than God almighty, the Lord reminded them of their place in the universe.

Whenever we come to think too highly of ourselves or too little of our neighbors; we might do well to retrace the cross on our brow- remembering who we are. When all the conflicts, and generally idolatrous activities are scrutinized by our creator our lives amount to little more than dust. It seems a funny thing then to be angry, or judgmental over anything; let alone the pettiness we are too often proud of... Perhaps this is something to reflect on beloved children. Perhaps this an opportunity to remember the dust of our existence.

Pr. Erik

FEBRUARY WORSHIP ASSISTANTS

USHERS: Jon Burks & Sam Bowen

DATE	ASST MINISTER	LECTORS	GREETERS & OFFERING	TELLERS
February 4	Camy Erickson	Lois Nelson	Shannon & Gary Christopher	2
February 11	Holli Hopp	John Christianson	Laurie & Jon Burks	3
February 14				3
February 18	Philip Stadem	Anne Christianson	RaiAnne & Matt Erickson	4
February 21				4
February 25	Gene Gatewood	Sherman Schueler	Lynn Hallberg & Troy Erickson	5
February 28				5

DATE	PROJECTION	SOUND	COMMUNION ASSISTANTS	ACOLYTES
February 4	Scott Johnson	Erin Johnson	Dustin Moran	Matthew & Jacob
February 11		Brian Gorans	Kathy Lindblad	Ashley & Steven
February 14				Austin & Matthew
February 18	Jake Vlaminck	Kim Gorans		Steven & Jacob
February 21				Austin
February 25		Jake Vlaminck		Ashley & Austin



Thank you so much for the new bag to carry my music in! It's a very thoughtful gift, and I'll use it a lot.

Glorifying God by leading the music at Svea is very rewarding for me, and I'm thankful that you all seem to enjoy it too! God bless you richly, Kari Stadem



2018 Yearbook

We will soon be publishing the yearbook again. If you have a change in your address or phone numbers, please let the church office know so we may update the Yearbook. Thank you, Debra, Parish Secretary

Notice

We will be having Communion on the 1st and 2nd Sunday of each month starting in February.



Mark your calendars for our Lenten Services. All services start at 7:00 pm

Ash Wednesday:

February 14

Lenten Services:

February 21 & 28

March 4, 11 & 18



Lent Begins
Ash Wednesday



Hope Pregnancy Center

Pastor Erik and Church,

Thank you so much for your generous donation to Hope. Your gift will help us end the year on a positive note and launch us into 2018. Because of your donation we can continue to touch the hearts of clients who are wrestling with having an abortion and in the end saving babies lives!

We Pray you Have a Blessed New Year!
Bruce Vogel,
Marketing and Development Director

Pastor's report for January 2018

Thank You to everyone who helped with Christmas services at church and the out at the barn.

Thank you to Dale and Debbie Tonsfeldt for hosting the service in the cold!

The service at Roseland on January 14th was a wonderful opportunity to gather with brothers and sisters in Christ in our corner of the county. Plans are being made to gather together again.

We have a new student in confirmation who joined 4 others currently in the confirmation program.

Lenten Round Robin with other churches is currently being planned. We will be hearing on Wednesday evenings from Pr. Joyce Graue of St. Johns in Raymond, Pr. Jon Nelson of Tripolis & Ebenezer in Kandiyohi, and Pr. LaDonna Ekern of United in Lake Lillian. I will be rotating with these congregations as well for our Wednesday evening gatherings.

Thank You to our newest council members Gene, Dustin, and Kaylee.

Plans are currently underway with the youth for two possible summer trips. A summer canoe trip down the Crow Wing River and Pathfinders Leadership Quest.

Ministerial Acts:

1/9/18 funeral for Sandra Kardell

Pastor's Dates: Equipping Congregations gathering 2/10 at Bethel Lutheran in Willmar

Vacation 2/16-2/22



YOUR QUILTS BRING COMFORT TO HOSPICE RESIDENTS IN INDIA

A recent distribution of LWR Mission Quilts brought color, warmth and comfort to the residents of the Arunima Hospice in Calcutta, India. The hospice gives shelter to children, including whose lives have been affected by HIV/AIDS, which carries a powerful stigma in India. Thank you for your gifts of love!



Visit lwr.org/faithinaction to see a photo gallery from this important quilt distribution.

January 2018 Church Council Meeting



1. Officers elected-

Pres.- Doug J.

V. Pres.- Gene G.

Sec.- Tracy G.

Treasurer- Doug H.

2. Communion to be administered on the 1st and 2nd Sunday of each month & on special occasions
3. Strategic planning meeting scheduled for Sunday February 11th, 2018 immediately following worship- at parsonage. Council members only- Pastor will provide us lunch!
4. All Committee meeting scheduled for Sunday February 25th, 2018 immediately following worship- in church basement. Council members will provide Soup and Breads for lunch- congregation is invited!
5. Installation of all council members- during worship service Sunday January 28th, 2018- This coming Sunday!
6. Next regularly scheduled council meeting will be Thursday February 15th, 2018 @ 7:30pm.

Thanks!

Doug J.

.....



Family Promise News

Our host week January 21-28 was a busy one. We hosted 7 guests during the week (5 adults and 2 children). Twenty-eight different people volunteered throughout the week. Family Promise is definitely a team effort. Thanks to everyone who volunteered!

If you haven't yet volunteered and would like to, please contact our coordinator Karen Schueler at 235-6568 or by email at shkaschu@frontietnet.net.

There is a change in our hosting schedule for the year. The Refuge (First Baptist) asked to trade weeks with us, so we no longer will host April 8-15, but will now host May 20-27.

The revised Family Promise hosting schedule for all of 2018 is:

January 21- 28

May 20 – 27

June 24 – July 1

September 16 – 23

November 4 – 11

Times Gone By—1869-1872

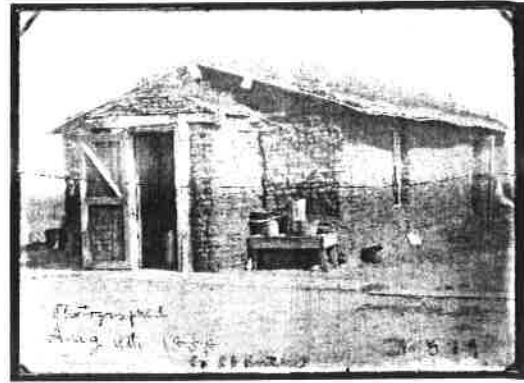
The beginning of Svea Lutheran Church

It was death that stalked at the door of one of our early pioneers which served as an impetus to the organization of the Svea Congregation: Rev Peter Beckman was called to bury the daughter of Nels Nelson in July 18, 1869. A God-fearing people wanted to give a child a Christian burial and receive the comfort of God's sustaining Word in the hour of bereavement.

Thereupon in the year of 1870 the decision was made to build a church. Under the leadership of Rev. Peter Beckman, the Evangelisk Lutherska Forsamlingen Svea (Evangelical Lutheran Church of Svea) was organized at a meeting held at the A.P. Johnson home (later occupied by Mauritz Johnson). Pastor Beckman served once a month with meetings held in homes. The Swedish language was used. The congregation was organized with 49 adults and 30 children. A year later there were an additional 12 adults and 15 children.

On February 11, 1870, first burial in Svea cemetery was Sven Johan Rykman, the first white man to die in Whitefield township who had frozen to death.

In 1872, the first church building was erected. Some of the pioneers pledged \$100.00 each to support the project. The constitution was adopted, and the congregation was admitted to the Augustana Synod in 1872.



A typical sod house where SLC was organized



ELCA Federal Credit Union helps its members save money

It's all about responsible financial stewardship. That's precisely what the ELCA Federal Credit Union is doing for its members. As the newest financial ministry of the ELCA, the credit union offers deposit accounts as well as auto loans, personal loans and credit cards.

Through Oct. 31, not quite a year and a half since it opened its doors, the credit union has provided nearly \$3 million in loans and credit cards to members. Already, it is saving each of its borrowers more than \$1,400 in finance charges over the life of each loan.

"That's a significant savings for each of our borrowers," said Luis Reyes, the credit union's chief operations officer. "Our mission is to help our members do more with their money. As a not-for-profit financial cooperative, the credit union exists to serve our members – not to make a profit. We return earnings to our members through more competitive rates on deposits and loans, fewer fees and enhanced services."

All ELCA members or employees are eligible to join the credit union and realize the advantages of this financial ministry. Family members are eligible to join as well. You can become a member by opening a savings account with a minimum \$25 deposit. Your savings with at the credit union allow this financial ministry to make low-cost loans to other Lutherans.

To apply for membership, learn more about the ELCA Federal Credit Union or view a video explaining how it operates, visit elcafcu.org or call 877-715-1111.



Lenten Personal Care Kit Collection Drive

Donate items for Lutheran World Relief Personal Care Kits to help people in need.

In response to the many natural disasters that have occurred throughout the world this past year, the Lakeland Conference Women of the ELCA are promoting the collection of LWR personal care kits. Our Global Mission Committee has taken up the challenge and are sponsoring the gathering of items to make these kits during the Lenten season. Our goal is to collect enough supplies to make 100 Personal Care Kits that will help impoverished people around the world stay healthy in life's most challenging situations.

Each kit contains:

- 1 light weight bath towel (dark colors are best-**Minimum size 20"x40" & Maximum size 52"x27"**)
- 2 bars of soap (any brand 4 to 5 oz. in original wrapping)
- 1 sturdy comb
- 1 metal nail clipper (either with or without a nail file)
- 1 adult size toothbrush (in original packaging).

Each week during Lent, we'll focus on collecting one of the kit items. Please bring your donation to worship and place it in the designated box.

February 18 - soap

February 25- lightweight bath towels (Minimum 20" x 40" and Maximum 27"x 52")

March 4 - toothbrushes

March 11 - combs

March 18 - nail clippers






March 25 - (Palm Sunday) - soap

The kits will be assembled in May. The exact date is not yet determined.

If you prefer, a donation of money towards the project is also very helpful. It costs approximately \$9.50 to purchase the items for each kit, plus \$2.65 to ship the kit and add the toothpaste at the final destination.

If you have any questions, please contact [Karen Schueler at 995-5668 or shkaschu@frontiernet.net].

FEBRUARY 2018

Sunday	Monday	Tuesday	Wednesday	Thursday	Friday	Saturday
						
4 9:30 am Sunday School; 9:45 am Coffee Fellowship 10:45 am Praise Service/Communion 12:00 pm Confirmation	5	6 6:00 am LMM/Breakfast/ Bible Study 1:30 pm Patience Circle at Delphes/potluck 2:00 pm Peace Circle at Church	7 6:30 pm Confirmation	8 1:00 pm Quilting 8:00 pm SFE Mtg	9	10 Equipping Congregation Day
11 9:30 am Sunday School 9:45 am Coffee Fellowship; 10:45 am WOV/Communion Service NO Confirmation	12	13 6:00 am LMM/ Prayer 7:30 Worship/Music Mtg	14 Valentine's Day  7:00 pm Ash Wednesday Service	15 1:00 pm Quilting 7:30 pm Council Meeting	16	17  Blomkest Fire Department Fish Fry 11 am -1 pm & 4 pm - 7 pm
18 9:30 am Sunday School; 9:45 am Coffee Fellowship 10:45 am Praise Service NO Confirmation	19 	20 6:00 am LMM/ Prayer	21 No Confirmation 7:00 pm Lenten Service	22 1:00 pm Quilting	23 Reminder articles due	24
25 9:30 am SCS 9:45 am Coffee Fellowship; 10:45 am LBW Service; 12:00 pm Lunch & All Committee Meetings <i>*Conference Assembly at Immanuel Lutheran Church in Clara City</i>	26 Reminder published NO Confirmation (Feb 25)	27 6:00 am LMM/ Breakfast/Bible Study	28 No Confirmation 7:00 pm Lenten Service			

February 2018
SVEA LUTHERAN CHURCH
REMINDER
SVEA LUTHERAN CHURCH
12651 15TH ST SE
SVEA MN 56216

February Birthdays

- | | |
|---------------------------|---------------------|
| 1. Madison Lindblad | 16. Glendon Pregler |
| 3. Dorothy Blomgren | Andrew Swenson |
| 5. Levi Lindblad | Joshua Mott |
| 7. Kent Jacobson | 17. Tina Bloch |
| Jon Burks | Tyler Arhendt |
| 8. Bruce Nelson | 19. Stephen Stuhr |
| Gary Christopher | 21. Joshua Boone |
| 10. Taryn Moran | 22. Evelyn Mikes |
| 11. Christopher Swierenga | 24. Lindsey Elliott |
| Braiden Landin | 25. Julie Newberg |
| 14. Pearl Berg | 27. Liz Gorans |
| 15. Dawn Oslund | 28. Katie Ross |
| Mackenze Eischens | |
| Jack Christianson | |